

Calibre No.	<b>1104A</b>	Jewels	<b>17j</b>	Style Name
-------------	--------------	--------	------------	------------



### Characteristics

Casing dimension: 15.15 × 13.00 mm  
 Maximum height: 4.30 mm  
 Vibrations per hour: 21,600  
 Non-automatic with sweep second  
 "Diashock" Shock Resistant Device

111110	☆121110	131110	161110	171110	205110	213110	401110	224110	
225110	231110	241110	245110	251110	301110	310110	315110	331110	341110
345110	261110	271110	281110	282110	283110	284100	285110	381110	
382110	383110	384110	385110	386110	396110	433110	453110	481150	491180
014353	014334	014355	011204	014317	351110				

										2/1
012107	012121	012124	012126	012237	012414	012541	012644	012704	390100	

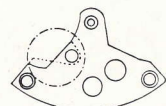
Calibre No.	<b>1104A</b>	Jewels	<b>17j</b>	Style Name	
-------------	--------------	--------	------------	------------	--

PART NO.	LIST OF MATERIALS	PART NO.	LIST OF MATERIALS
111110	Barrel bridge	012121	Stud screw
☆121110	Train-wheel bridge	012124	Friction spring screw for sweep second pinion
131110	Third wheel bridge	012126	Pallet cock screw
161110	Pallet cock	012237	Bridge screw
171110	Balance cock	012237	Third wheel bridge screw
205110	Complete barrel with arbor	012237	Balance cock screw
213110	Barrel arbor	012414	Ratchet wheel screw
224110	Center wheel & pinion with cannon pinion	012541	Crown wheel screw
225110	Cannon pinion	012644	Click screw
231110	Third wheel & pinion	012704	Setting lever spring screw
241110	Fourth wheel & pinion	011521	Upper hole jewel for center wheel
245110	Sweep second pinion	011150	Lower hole jewel for center wheel
251110	Escape wheel & pinion	011523	Lower hole jewel for 3rd wheel
261110	Minute wheel	011713	Lower hole jewel for sweep second pinion
271110	Hour wheel	011505	Lower hole jewel for escape wheel
281110	Setting wheel	011505	Upper hole jewel for pallet
282110	Clutch wheel	011505	Lower hole jewel for pallet
283110	Winding pinion	013106	Tube for pallet cock screw
284100	Crown wheel	013112	Tube for bridge screw, short
285110	Ratchet wheel	013172	Tube for bridge screw, long
301110	Jewelled pallet fork & staff		
310110	Balance complete with stud		
315110	Balance staff		
331110	Roller with jewel		
341110	Regulator		
345110	Stud holder		
351110	Winding stem		
381110	Click		
382110	Click spring		
383110	Setting lever		
384110	Yoke (Clutch lever)		
385110	Yoke spring (Clutch lever spring)		
386110	Setting lever spring (Set bridge)		
390100	Setting lever axle		
396110	Friction spring for sweep second pinion		
401110	Mainspring (self-greasing)		
433110	Upper hole jewel with frame for 3rd wheel		
433110	Upper hole jewel with frame for 4th wheel		
453110	Upper hole jewel with frame for escape wheel		
481150	Crown wheel ring		
491180	Dial washer		
014353	Diashock upper frame		
014334	Diashock lower frame		
014355	Diashock hole jewel with frame		
011204	Diashock cap jewel		
014317	Diashock spring		
012107	Dial screw		

Remarks :

Train-wheel bridge

☆121110.....Two different shapes in the same part number (interchangeable).



☆ ⇨ Please see remarks.

Items in light letters are not shown in photos.